



HALBMOND  
TEPPICHWERKE



*Quickstep*  
Carpetcollection

# Quickstep

Carpetcollection

## Introduction

A good dancer must certainly master the quickstep to be able to compete with other dancing couples. It can be regarded as the brightest and liveliest of the ballroom dances: the dance characteristics of the quickstep express themselves in rapid, controlled and flowing movements. This dance has a capricious mixture of dynamic steps, a fast tempo and continuous changes. With their almost floating lightness of step, their overflowing zest for life and the flexibility of their knees and feet, tournament quickstep dancers move like swirling champagne bubbles!

### **Quickstep collection by Halbmond:**

- 900g/m<sup>2</sup> of branded polyamide for high contract performance
- produced with the latest Chromojet-technology
- 36 designs of all kinds
- 6 colour options per design
- straightforward selection
- easy to order
- short delivery time
- competitive price

**Beautiful, quick and simple. Lively and elegant.**



Repeat appr.: 133x77cm



11 12 13 18 19 Q01-1



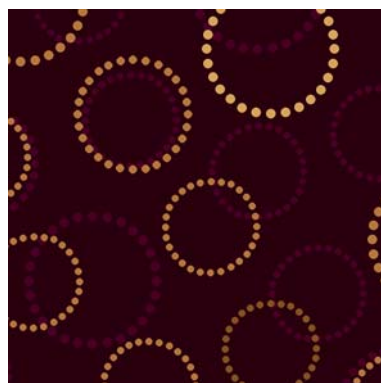
01 02 11 12 13 Q01-2



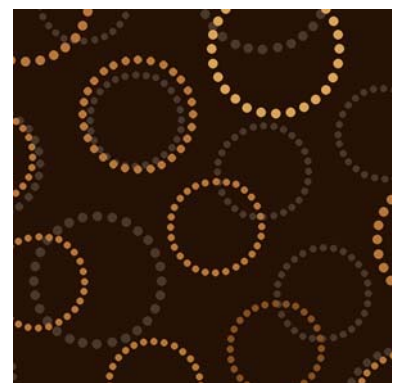
05 06 10 11 12 Q01-3



10 11 12 13 14 Q01-4



11 12 13 15 16 Q01-5

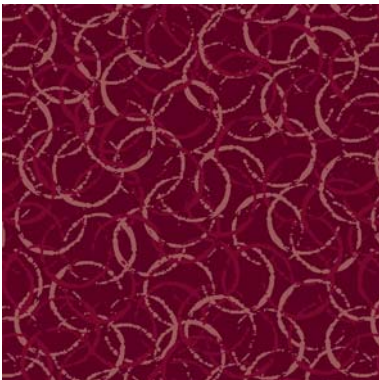


11 12 13 21 22 Q01-6



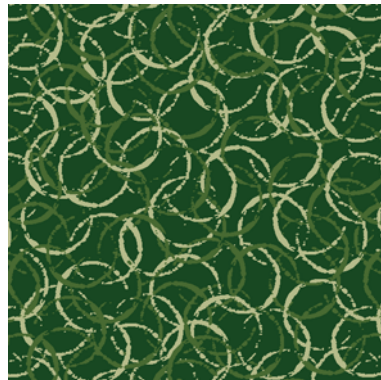


Repeat appr.: 57x56cm



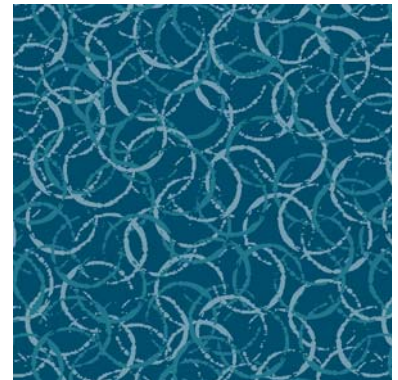
18 19 20

Q02-1



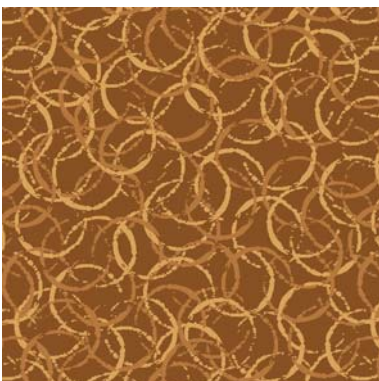
02 03 04

Q02-2



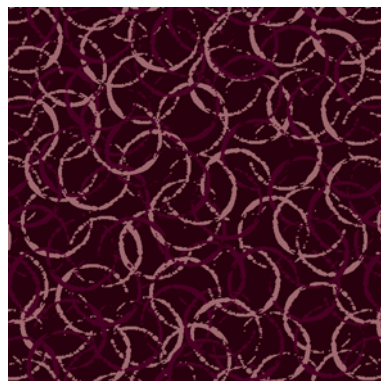
06 07 08

Q02-3



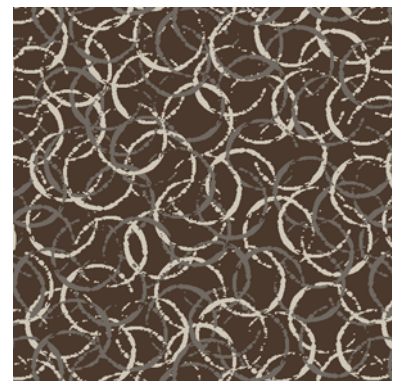
11 12 13

Q02-4



15 16 17

Q02-5



22 23 24

Q02-6



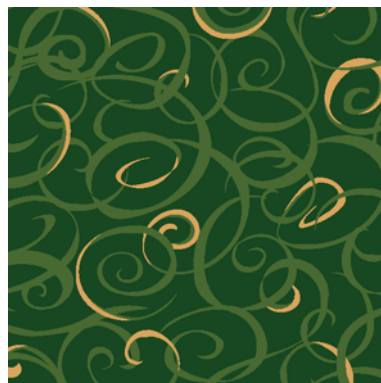


Repeat appr.: 67x66cm



13 18 20

Q03-1



02 03 13

Q03-2



06 07 13

Q03-3



10 12 13

Q03-4



13 16 17

Q03-5



13 22 23

Q03-6



Repeat appr.: 133x66cm



18 19 20

Q04-1



02 03 04

Q04-2



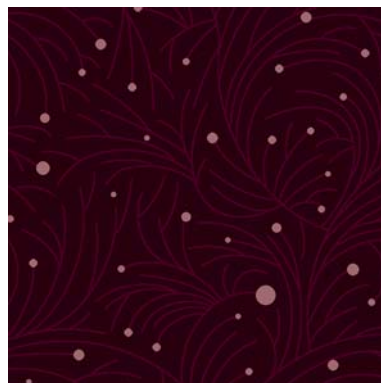
05 06 08

Q04-3



10 11 12

Q04-4



15 16 17

Q04-5



22 23 24

Q04-6





Repeat appr.: 31x30cm



18 19 20

Q05-1



02 03 04

Q05-2



06 07 08

Q05-3



11 12 13

Q05-4



15 16 17

Q05-5



21 23 24

Q05-6





Repeat appr.: 33x32cm



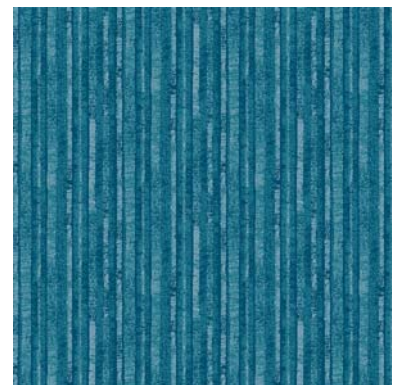
18 19 20

Q06-1



01 02 03

Q06-2



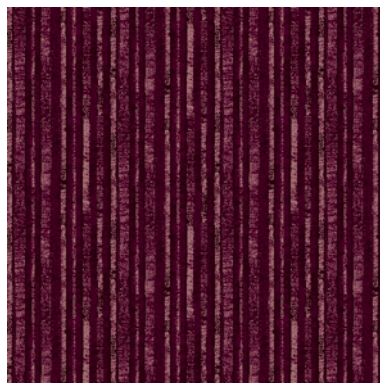
06 07 08

Q06-3



12 13 14

Q06-4



15 16 17

Q06-5



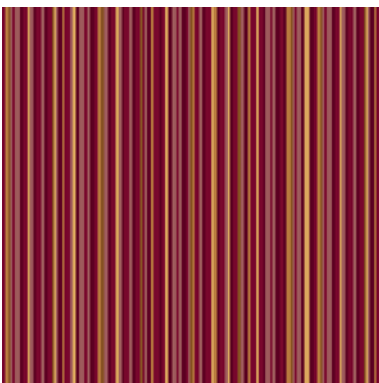
22 23 24

Q06-6

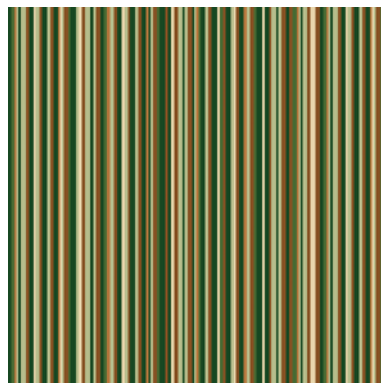




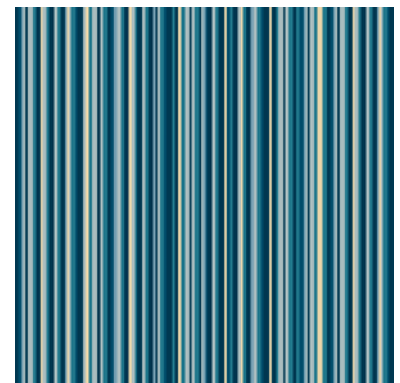
Repeat appr.: 50x49cm



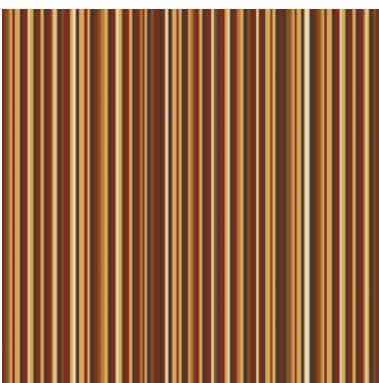
11 12 13 18 19 20 Q07-1



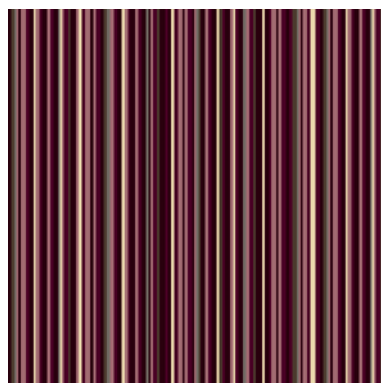
02 03 04 11 12 14 Q07-2



05 06 07 08 09 14 Q07-3



10 11 12 13 14 22 Q07-4



14 15 16 17 22 23 Q07-5



12 13 21 22 23 24 Q07-6



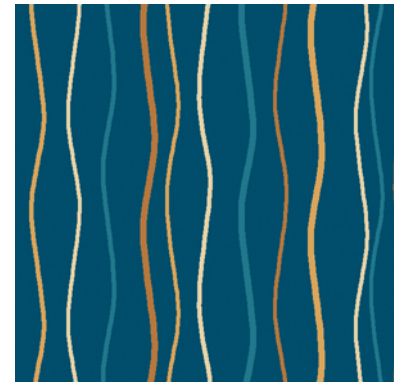
Repeat appr.: 67x33cm



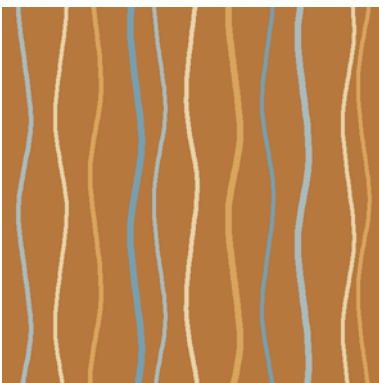
12 13 14 18 20 Q08-1



02 03 12 13 14 Q08-2



06 07 12 13 14 Q08-3



08 09 12 13 14 Q08-4



14 16 17 23 24 Q08-5

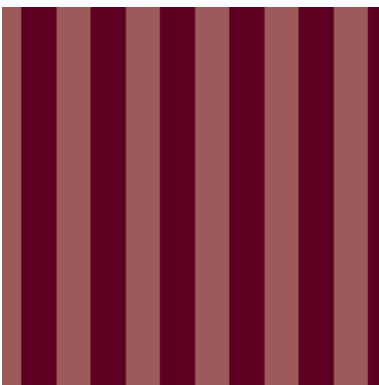


12 13 14 22 23 Q08-6



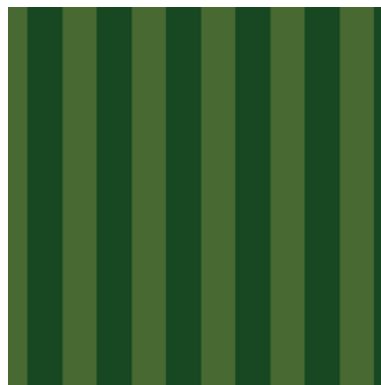


Repeat appr.: 11x11cm



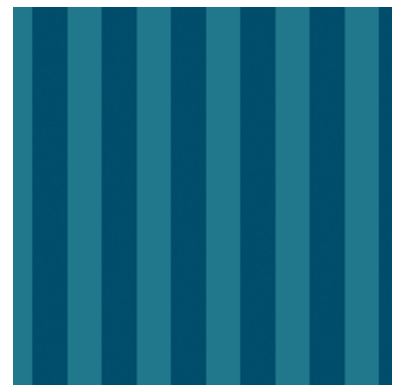
18 20

Q09-1



02 03

Q09-2



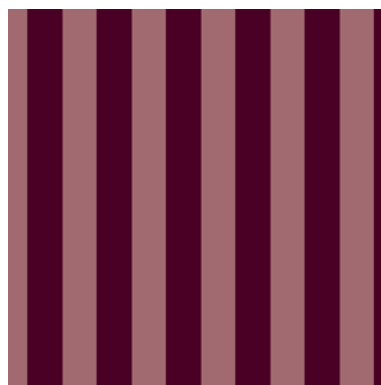
06 07

Q09-3



11 12

Q09-4



16 17

Q09-5



22 23

Q09-6



Repeat appr.: 33x16cm



18 19 20

Q10-1



01 02 03

Q10-2



05 06 07

Q10-3



10 11 12

Q10-4



15 16 17

Q10-5



21 22 23

Q10-6





Repeat appr.: 133x156cm



18 19 20

Q11-1



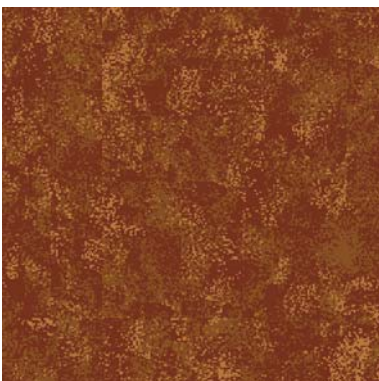
01 02 03

Q11-2



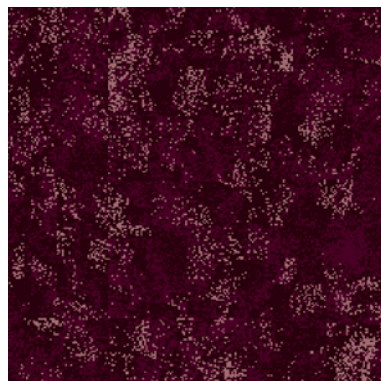
05 06 07

Q11-3



10 11 12

Q11-4



15 16 17

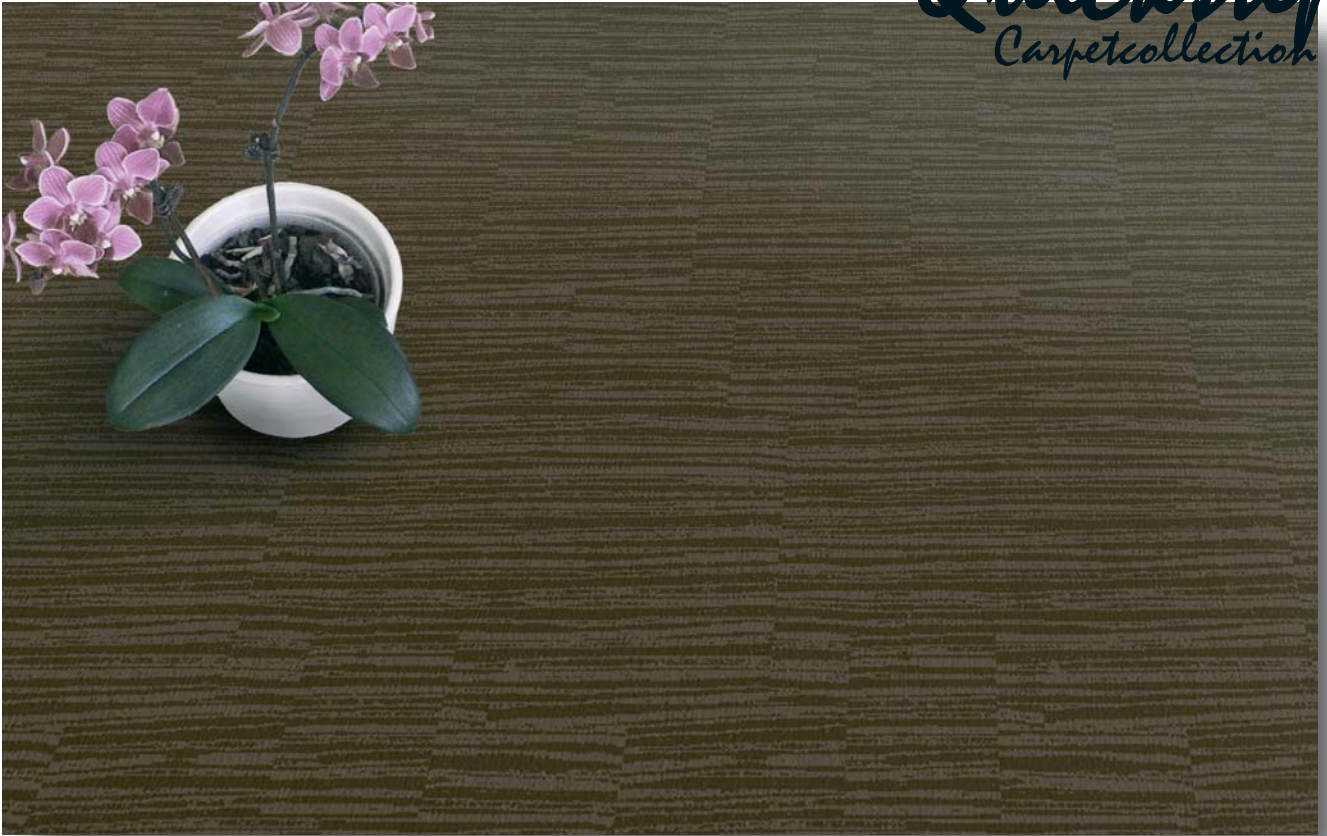
Q11-5



21 22 23

Q11-6





Repeat appr.: 31x47cm



18 20

Q12-1



02 03

Q12-2



06 07

Q12-3



11 12

Q12-4



16 17

Q12-5



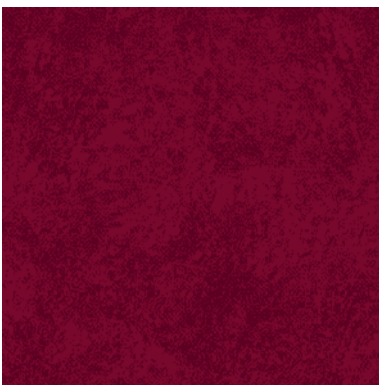
22 23

Q12-6



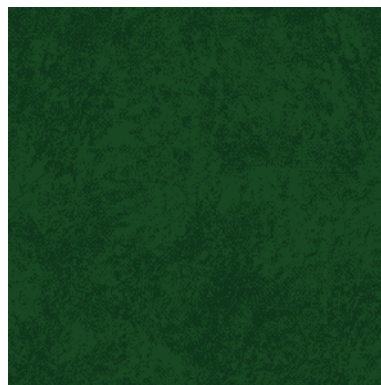


Repeat appr.: 100x98cm



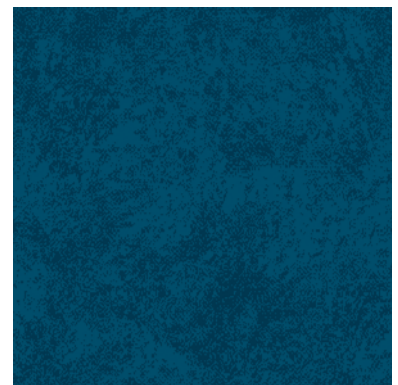
18 19

Q13-1



01 02

Q13-2



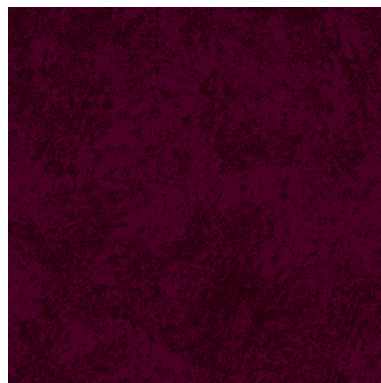
05 06

Q13-3



11 12

Q13-4



15 16

Q13-5



21 22

Q13-6





Repeat appr.: 133x120cm



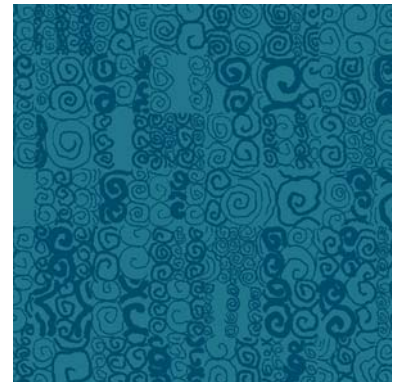
18 20

Q14-1



02 03

Q14-2



06 07

Q14-3



11 12

Q14-4



16 17

Q14-5



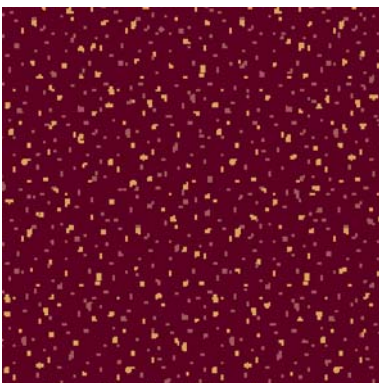
22 23

Q14-6





Repeat appr.: 67x66cm



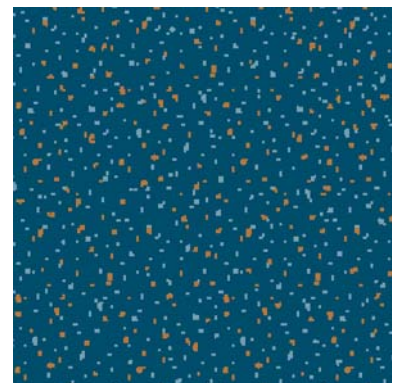
13 18 20

Q15-1



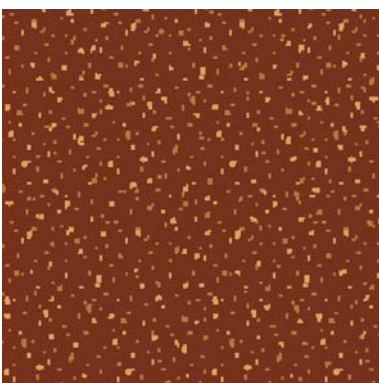
02 03 12

Q15-2



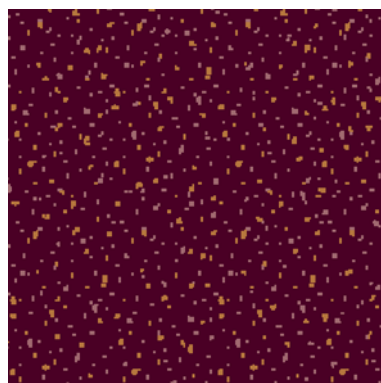
06 08 12

Q15-3



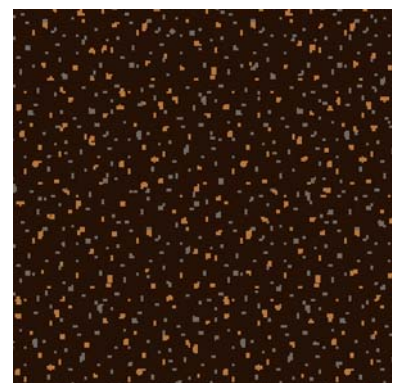
10 12 13

Q15-4



12 16 17

Q15-5



12 21 23

Q15-6





Repeat appr.: 3x3cm



18 20

Q16-1



02 03

Q16-2



05 07

Q16-3



11 12

Q16-4



16 17

Q16-5



21 23

Q16-6

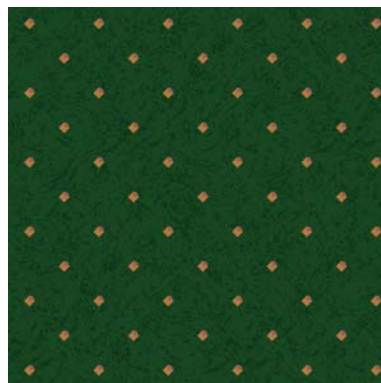




Repeat appr.: 67x66cm



03 12 18 19 Q17-1



01 02 12 20 Q17-2



03 05 06 12 Q17-3



07 10 11 12 Q17-4



11 12 15 16 Q17-5



12 17 21 22 Q17-6

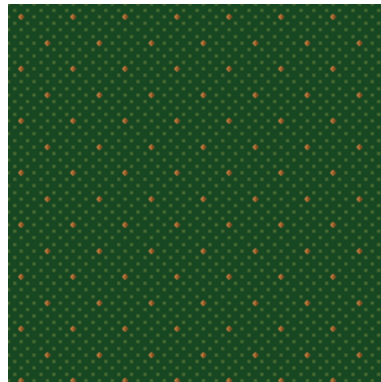


Repeat appr.: 8x8cm



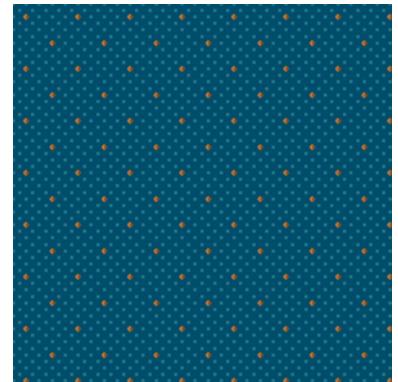
12 13 18 20

Q18-1



02 03 11 12

Q18-2



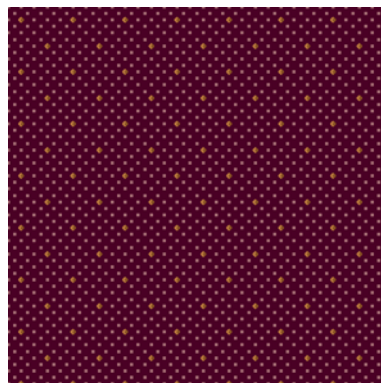
06 07 11 12

Q18-3



11 12 13 14

Q18-4



11 12 16 17

Q18-5



12 13 22 23

Q18-6

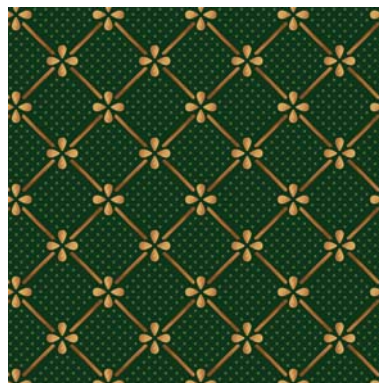




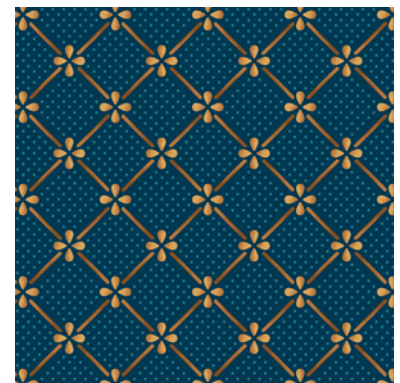
Repeat appr.: 15x15cm



11 12 13 18 20 Q19-1



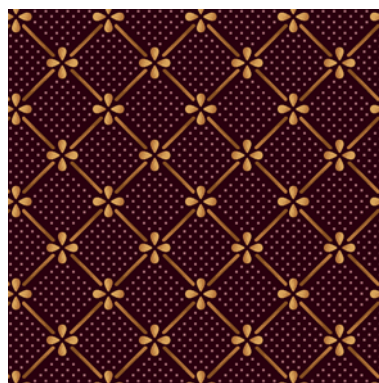
01 03 11 12 13 Q19-2



05 07 11 12 13 Q19-3



10 12 13 14 Q19-4



11 12 13 15 17 Q19-5



11 12 13 21 23 Q19-6

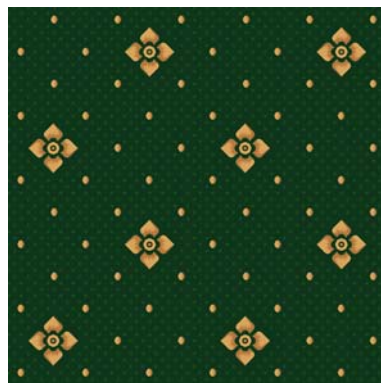




Repeat appr.: 31x30cm



12 13 18 19 Q20-1



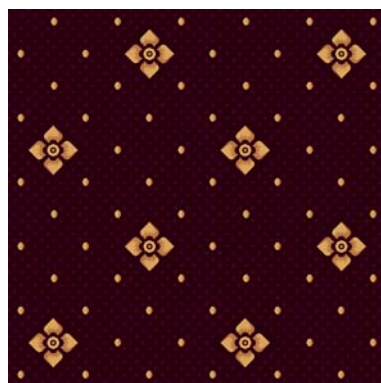
01 02 12 13 Q20-2



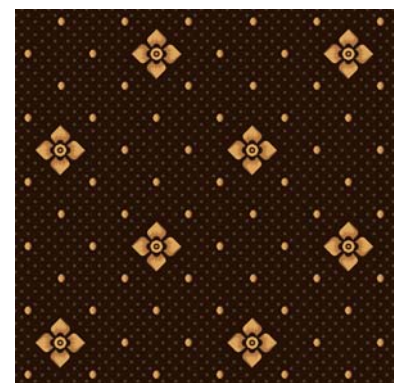
05 06 12 13 Q20-3



10 11 12 13 Q20-4



12 13 15 16 Q20-5



12 13 21 22 Q20-6





Repeat appr.: 33x33cm



12 13 19

Q21-1



02 12 13

Q21-2



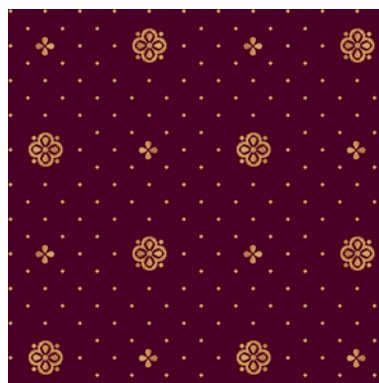
06 12 13

Q21-3



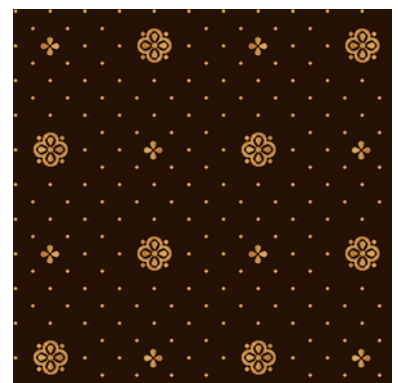
10 12 13

Q21-4



12 13 16

Q21-5



12 13 21

Q21-6





Repeat appr.: 40x86cm



18 20

Q22-1



02 03

Q22-2



06 07

Q22-3



11 12

Q22-4



16 17

Q22-5



21 23

Q22-6





Repeat appr.: 80x56cm



12 13 18 19

Q23-1



01 02 03 04

Q23-2



05 06 07 09

Q23-3



10 11 13 14

Q23-4



15 16 23 24

Q23-5



21 22 23 24

Q23-6





Repeat appr.: 100x106cm



18 19 20

Q24-1



01 03 04

Q24-2



06 08 09

Q24-3



10 12 13

Q24-4



15 16 17

Q24-5



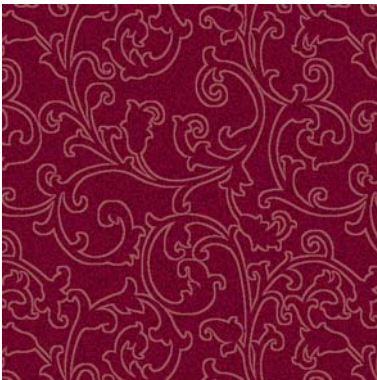
21 23 24

Q24-6



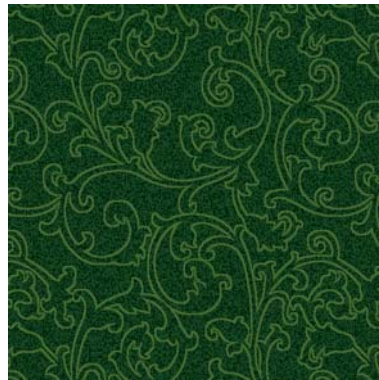


Repeat appr.: 50x49cm



18 19 20

Q25-1



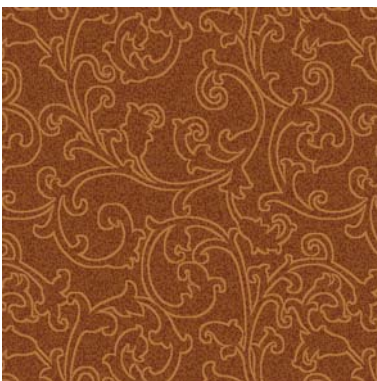
01 02 03

Q25-2



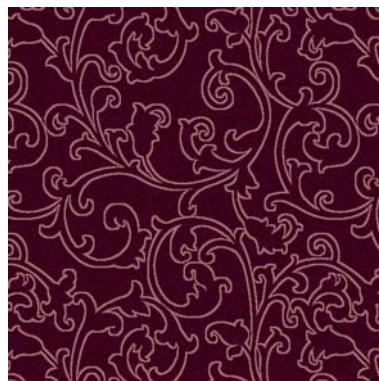
05 06 07

Q25-3



10 11 12

Q25-4



15 16 17

Q25-5



21 22 23

Q25-6





Repeat appr.: 57x37cm



18 19 20

Q26-1



01 02 03

Q26-2



05 06 07

Q26-3



10 11 12

Q26-4



15 16 17

Q26-5



21 22 23

Q26-6





Repeat appr.: 100x119cm



18 19 24

Q27-1



02 03 04

Q27-2



05 06 08

Q27-3



10 11 13

Q27-4



15 16 23

Q27-5



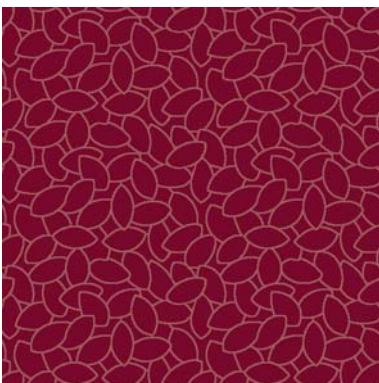
22 23 24

Q27-6





Repeat appr.: 31x21cm



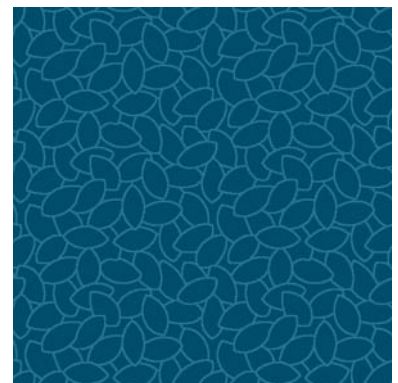
19 20

Q28-1



02 03

Q28-2



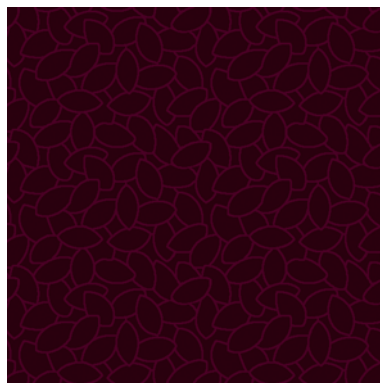
06 07

Q28-3



11 12

Q28-4



15 16

Q28-5



22 23

Q28-6





Repeat appr.: 50x48cm



18 20

Q29-1



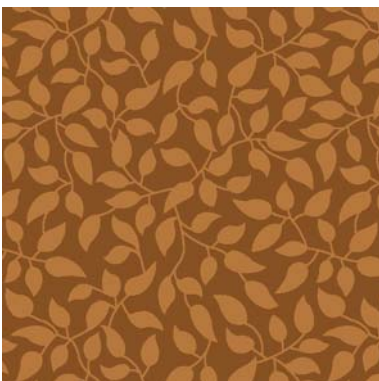
02 03

Q29-2



06 07

Q29-3



11 12

Q29-4



15 16

Q29-5



22 23

Q29-6





Repeat appr.: 80x56cm



11 12 13 18 19 Q30-1



01 02 11 12 13 Q30-2



05 06 11 12 13 Q30-3



10 11 12 13 14 Q30-4



11 12 13 15 16 Q30-5



11 12 13 21 22 Q30-6





Repeat appr.: 31x30cm



11 12 13 19

Q31-1



01 11 12 13

Q31-2



05 11 12 13

Q31-3



10 11 12 13

Q31-4



11 12 13 16

Q31-5



11 12 13 22

Q31-6





Repeat appr.: 67x66cm



12 13 18 19 Q32-1



02 03 12 13 Q32-2



06 07 12 13 Q32-3



10 11 12 13 Q32-4



12 13 16 17 Q32-5



12 13 22 23 Q32-6





Repeat appr.: 31x30cm



12 13 18 20 Q33-1



02 03 12 13 Q33-2



05 07 12 13 Q33-3



10 11 12 13 Q33-4



12 13 16 17 Q33-5



12 13 21 23 Q33-6





Repeat appr.: 50x49cm



03 11 12 13 18 Q34-1



01 03 11 12 13 Q34-2



03 05 11 12 13 Q34-3



03 10 11 12 13 Q34-4



03 11 12 13 16 Q34-5



03 11 12 13 22 Q34-6





Repeat appr.: 40x39cm



11 12 13 18 19 Q35-1



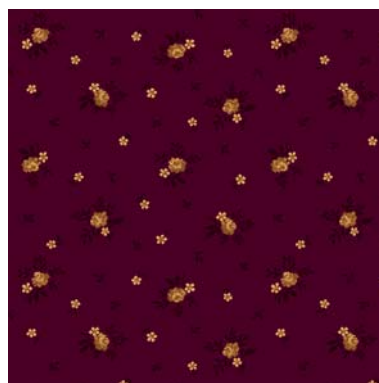
02 03 11 12 13 Q35-2



06 07 11 12 13 Q35-3



11 12 13 14 22 Q35-4



11 12 13 15 16 Q35-5



11 12 13 22 23 Q35-6



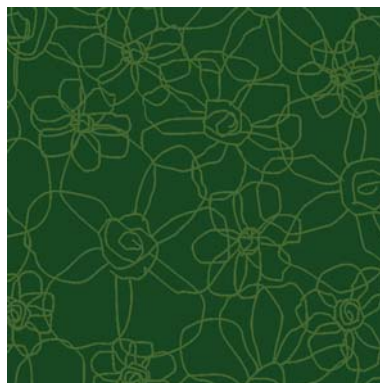


Repeat appr.: 67x66cm



18 20

Q36-1



02 03

Q36-2



06 07

Q36-3



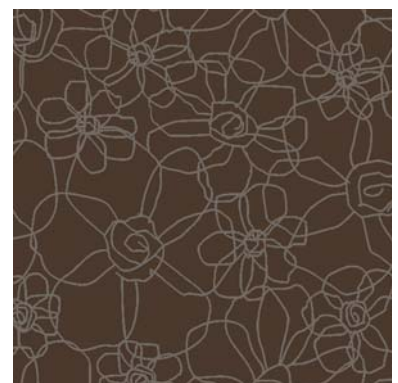
11 12

Q36-4



16 17

Q36-5











22 23

Q36-6



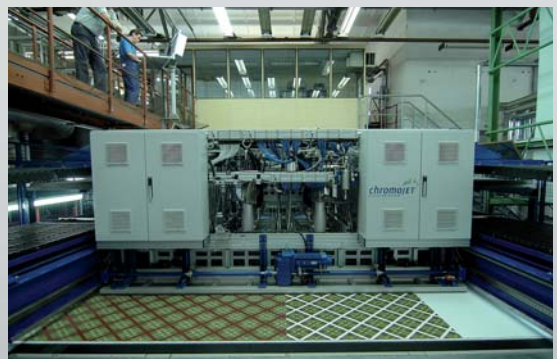
## Technical Data

Quality		<b>AP 900</b>
Construction		Tufted cut pile Saxony 1/10"
Pattern design		Jet Print Chromojet
Pile material		100% Polyamide
Secondary backing		textile backing
Total weight		1800 g/m <sup>2</sup>
Pile charge weight		900g/m <sup>2</sup>
Overall thickness		7,0 mm
Pile density		0,12 g/cm <sup>3</sup>
Tufts/m <sup>2</sup>		169.850
Suitable for stairs nosing		positiv
Suitable for under floor heating		positiv
Castor chair suitability		positiv
Slip resistance		positiv
Electrical behaviour		<2,0KV
Impact sound reduction		24 dB
Thermal resistance		0,13 m <sup>2</sup> K/W
Reaction to fire		C(fl)-s1
CE number		1658-CPD-1170
Wear rating		class 32 Commercial General
Comfort rating		LC2
Delivery in		rolls
Width		400 cm
Suggested use		rooms corridors restaurant office

## Colour Bank

<b>01</b> 6120	<b>13</b> 2051
<b>02</b> 6067	<b>14</b> 8050
<b>03</b> 6063	<b>15</b> 3068
<b>04</b> 6078	<b>16</b> 3063
<b>05</b> 5079	<b>17</b> 4055
<b>06</b> 5077	<b>18</b> 3071
<b>07</b> 5074	<b>19</b> 3078
<b>08</b> 5073	<b>20</b> 3080
<b>09</b> 6050	<b>21</b> 8070
<b>10</b> 2065	<b>22</b> 8068
<b>11</b> 2063	<b>23</b> 8066
<b>12</b> 2053	<b>24</b> 8064





## Halbmond Teppichwerke GmbH

Carl-Wilhelm-Koch-Str. 6  
D-08606 Oelsnitz/Vogtland

Telephone: +49 (0) 3 74 21 - 42-0  
Fax: +49 (0) 3 74 21 - 42-571

info@halbmond.de  
www.halbmond.de



HALBMOND  
TEPPICHWERKE